

READ CAREFULLY BEFORE USING YOUR DOLPHIN MAGIC ROBOT POOL CLEANER

DOLPHIN CADDY ASSEMBLY

Please follow these instructions and refer to the attached diagram when assembling your CADDY [fig a, p-4].

- Connect the wheel assembly [c-1], while making sure it is centered, with a washer [c-2] on each side, inserting it with a sharp knock into the groove at the bottom of the base.
- Insert the two straight pieces of pipe [c-6] into the aperture in the tower until they "click" into the clips in the studs [c-3] on the base of the tower [c-4].

Note: There are 2 small holes at each end of the pipe.

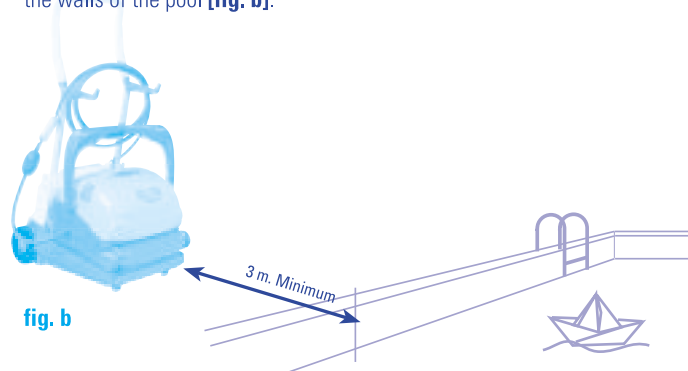
The holes which are located at a shorter distance from the edge of the pipe must be inserted into the base.

- Insert the top of the handle [c-7] until it "clicks" into the pipes.

- Fasten the plastic power supply [c-5] to the CADDY tower by fitting the slots in the back of the power supply's handle over the "T" pins in the tower, and pressing down firmly until the base of the power supply reaches the base of the tower.

INSTALLATION

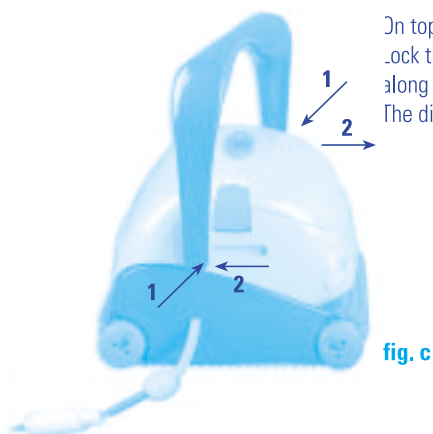
Position CADDY and power supply at least 3 m. from pool's edge so that the DOLPHIN MAGIC can reach all the walls of the pool [fig. b].



On top of the front section there are lights

Lock the handle diagonally across the top of the body by pressing side of handle inwards and sliding along the slot following the arrow direction. [fig. c].

The diagonal position should not be changed.



OPERATION

Uncoil cable and connect to the DOLPHIN MAGIC power supply.
Place cable and the DOLPHIN MAGIC in pool, gently rock the DOLPHIN MAGIC from side to side releasing trapped air until the DOLPHIN MAGIC sinks slowly to the pool bottom.
Plug the power supply mains plug into a socket protected by a ground fault circuit interrupter.
Warning! Do not operate the DOLPHIN MAGIC out of the water. This may result in extensive damage to the pump motor seals, thus invalidating the warranty.

Switch on and let the DOLPHIN MAGIC work its wonders!

Warning! DO NOT ENTER THE SWIMMING POOL WHILE THE DOLPHIN MAGIC IS IN OPERATION.

100 minutes later after completing it's work cycle, the DOLPHIN MAGIC will automatically shut down.

Warning! SWITCH OFF POWER SUPPLY BEFORE REMOVING THE DOLPHIN MAGIC FROM THE POOL.

- Remove the DOLPHIN MAGIC from the water by reeling in and coiling cable, using large loops.
- When the DOLPHIN MAGIC reaches the surface, lift by the handle, NOT by the cable **[fig. d]**.

AUTOMATIC SHUT DOWN

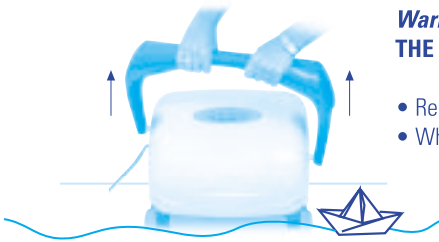


fig. d

MAINTENANCE



fig. e

Clean filter bag after each use.

- Release the two body latches. Remove cover.
- Remove filter bag by grasping loops **[fig. e]**.
- With the filter bag turned inside out - wash thoroughly using a garden hose.

clean the impeller occasionally.

Warning! ENSURE POWER SUPPLY IS SWITCHED OFF BEFORE REMOVING IMPELLER TUBE.

- Remove the safety screw, pointed by the red arrow, by using a screwdriver.
- Remove impeller tube by twisting clockwise and lifting **[fig. f]**.
- The impeller should move freely and be clear of all debris, hair etc.
- Rinse interior.



To open the impeller tube
fig. f

- Assemble impeller tube - arrows facing each other [fig. g]. Twist anti-clockwise.
 - Lock the safety screw back into its position.
 - Place the filter bag in the DOLPHIN MAGIC with the red loop on the inside facing the front, fitting the plastic oval ring on the impeller tube.
- Ensure that the mid section of the filter bag frame fits under the lip while the side section sits above the lip [fig. h].

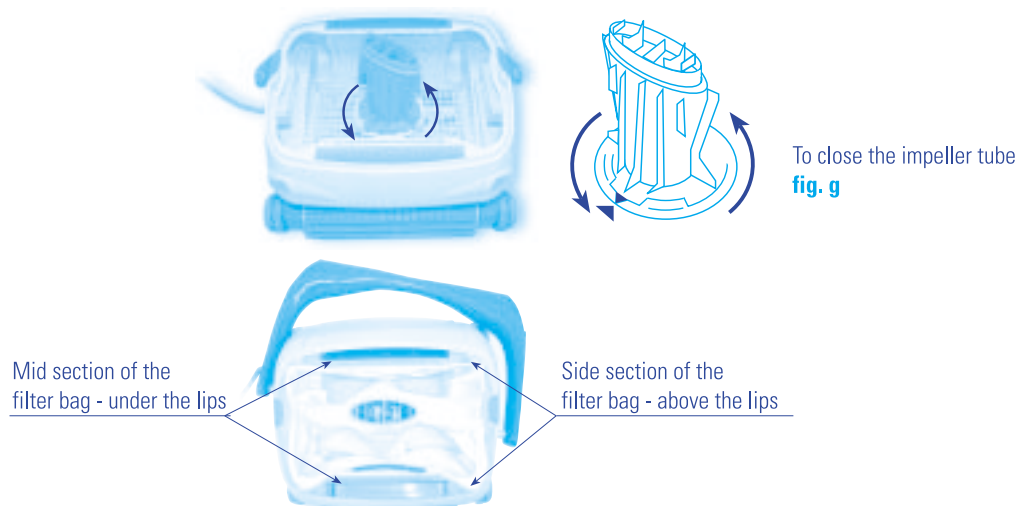


fig.h

HELPFUL TIPS

- Clean filter bag whenever you remove the DOLPHIN MAGIC from the pool. A dirty bag can become dry and unusable.
- Check PH level of pool water [optimally 7.0 - 7.2].
- Check water temperature [12° C - 32° C].
- Check that the brushes are in a good condition.
- Always switch the power supply "off", wait 30 seconds and switch "on" again to start a new cleaning cycle.
- Store the DOLPHIN MAGIC - not on its brushes - in the shade and at a temperature of between 5° C - 45° C.

Although the DOLPHIN MAGIC has been tested in a wide range of swimming pools, MAYTRONICS cannot accept responsibility if the DOLPHIN MAGIC is not entirely suitable for a particular pool.

**DOLPHIN MAGIC
"CADDY"**

fig. a

